

# EON Universal: Recognition → Twin

Save **95%** of Genesis 3D content-generation time —  
turning photos and a P&ID into an accurate 3D twin

<b>95%</b> less 3D build time	<b>~12 days</b> → <b>min</b> per facility	<b>137 / 133</b> parts / pipes read	<b>21 / 22</b> placed in real 3D
----------------------------------	---	--	-------------------------------------

How EON Universal fuses a facility's engineering drawing with ordinary photographs to build a labelled, connected, correctly-scaled, and validated 3D twin — comprehensively solving the single hardest part of adopting a digital-twin platform: building the 3D environment.



## Table of Contents

<b>Executive summary</b> .....	<b>2</b>
<b>1. The problem - 3D content is the bottleneck</b> .....	<b>2</b>
<b>2. Where we started - and why it wasn't enough</b> .....	<b>2</b>
<b>3. The breakthrough - EON Universal</b> .....	<b>3</b>
<b>4. How it works - the method</b> .....	<b>4</b>
The five mechanisms that make it work.....	5
<b>5. Proof on a real facility</b> .....	<b>5</b>
<b>6. The business case</b> .....	<b>6</b>
<b>7. Trust - proven, not asserted</b> .....	<b>6</b>
<b>8. Why it is defensible</b> .....	<b>6</b>
<b>9. Conclusion</b> .....	<b>7</b>

## Executive summary

Building the 3D environment is the most expensive and time-consuming part of standing up an industrial digital twin — and the biggest single obstacle customers face when adopting EON Genesis. Done conventionally, modelling one facility from scans and drawings can consume on the order of twelve skilled person-days and still yield uneven results.

**EON Universal removes that obstacle. It fuses the facility’s existing engineering drawing (P&ID) with ordinary photographs to generate a labelled, connected, correctly-scaled, and independently-validated 3D twin — cutting 3D content-generation time by roughly 95%, from days to minutes, with a better result.**

*“We tried the obvious thing first — a few pictures into an image-to-3D tool — and it didn’t work. EON Universal solves it end-to-end: every image, the real skeleton, the right components, the right pipes.”*

This paper explains why the naïve “photos-to-3D” approach fails, how EON Universal solves it through a three-signal fusion, what has been proven on a real facility, the business case, and why the method is defensible.

## 1. The problem - 3D content is the bottleneck

A digital twin is only as useful as the accuracy of its 3D environment. Yet producing that environment from a real, as-built facility is the slowest, most specialized step in the entire workflow. Laser-scan-to-model efforts are accurate but labour-intensive and expensive; a single skid can absorb ~12 person-days of expert work, and the quality varies with the operator. For customers evaluating Genesis, this is the wall they hit: they have the drawings and the photos, but turning them into a usable 3D world is hard, slow, and costly. We call it the “Beast” problem, after the reference rig on which we solved it.

## 2. Where we started - and why it wasn’t enough

Our first instinct was the obvious one: take a few pictures, drop them into an image-to-3D generator (Tripo), and let it produce a model. It was insufficient and primitive, and gave poor results — for concrete reasons:

- **Resolution** — the imagery wasn’t detailed enough for real structure.
- **No distances** — the generator could not recover the true distances between components from the pictures.

- **No intelligent stitching** — it could not register many photographs into one accurate, coherent 3D model.
- **A blob, not a twin** — the output was a single blurry mesh that did not know what each part is, what connects to what, or its real size — impressive-looking, but not usable.

The lesson: a generic mesh is not a twin. A facility carries three distinct kinds of information, and no single tool or input supplies all three.

### 3. The breakthrough - EON Universal

EON Universal treats a facility as three independent “truths,” and takes each from the source that actually holds it:

<b>Identity (WHAT)</b>	which parts exist; what each is	the drawing’s symbols + tags
<b>Topology (HOW)</b>	which parts connect — the pipes	the drawing’s lines (a photo can’t see hidden runs)
<b>Geometry (WHERE)</b>	real position, size, depth	the photographs (a flat drawing has no coordinates)

It then does what a generic generator never could:

- Take ALL the images — not just a few — from any angle.
- Stitches them intelligently into one coherent 3D skeleton of the facility, with real depth.
- Uses the EON Universal component library to attach the right, recognized components onto that skeleton — real, correctly-scaled models, not a blob.
- On the Configurator side, lays in the right piping between them.
- Carries confidence on every value, and validates the result against the original photographs.

**The result is a method that is highly accurate, very fast, and genuinely intelligent.**

## 4. How it works - the method



Figure 1 — an EON reconstruction of the reference rig: parts placed at measured 3D poses with topology. Depth is real, not inferred.

The pipeline runs in six steps:

**Step 1 · Read the drawing.** Detect every component and tag; trace the lines into a connectivity graph — identity and topology.

**Step 2 · Read all the photos.** Not a few — all of them, from any angle. A vision system is given the drawing's tag list and returns a labelled 3D box (position, size, orientation, confidence) for each part it sees.

**Step 3 · Stitch into a skeleton.** The photographs are registered into one common 3D frame — a coherent skeleton with true front-to-back depth, exploiting side and oblique views to resolve distance.

**Step 4 · Attach real components.** For each tag, the library snaps the correct clean 3D model onto the skeleton, scaled to a ground-truth library dimension rather than to the imagery estimate. One part of known size anchors the scale of the whole facility.

**Step 5 · Route the real pipes.** The Configurator routes engineering-correct piping between the placed parts along the drawing's connectivity — fresh pipes, no crossings — never lifted from the noisy scan.

**Step 6 · Validate.** Every value carries a confidence; the finished twin is checked back against the original photographs.

## The five mechanisms that make it work

- **Tag as a universal join key** — the drawing's unique tags are handed to the vision model; every 3D box is labelled with a tag, so fusion is a deterministic join, not fragile geometry-matching.
- **Confidence-governed construction** — the builder trusts measured geometry when confidence is high and falls back to a clearly-labelled layout when it is low; it never presents a guess as a measurement.
- **Library-anchored scale** — absolute size comes from the library's ground-truth dimensions, overcoming the scale-blindness of imagery.
- **Fresh pipes from topology** — piping is generated anew from the authoritative connection graph, not extracted from scan or drawing.
- **Reverse-projection validation** — the clean twin is projected back onto the photograph and scored, rather than compared against a second noisy 3D.

## 5. Proof on a real facility

On the reference rig, a four-sheet P&ID was read to 137 parts and 133 pipe connections. From operator photographs — recovered from low-resolution thumbnails to their high-resolution originals by perceptual fingerprint — EON Universal placed 21 of 22 parts in a region of interest into real 3D. An initial flat result was self-corrected, using the side views, into genuine depth across eight distinct levels: seen from above, the reconstruction reads as a rectangle (a real footprint), not a line.

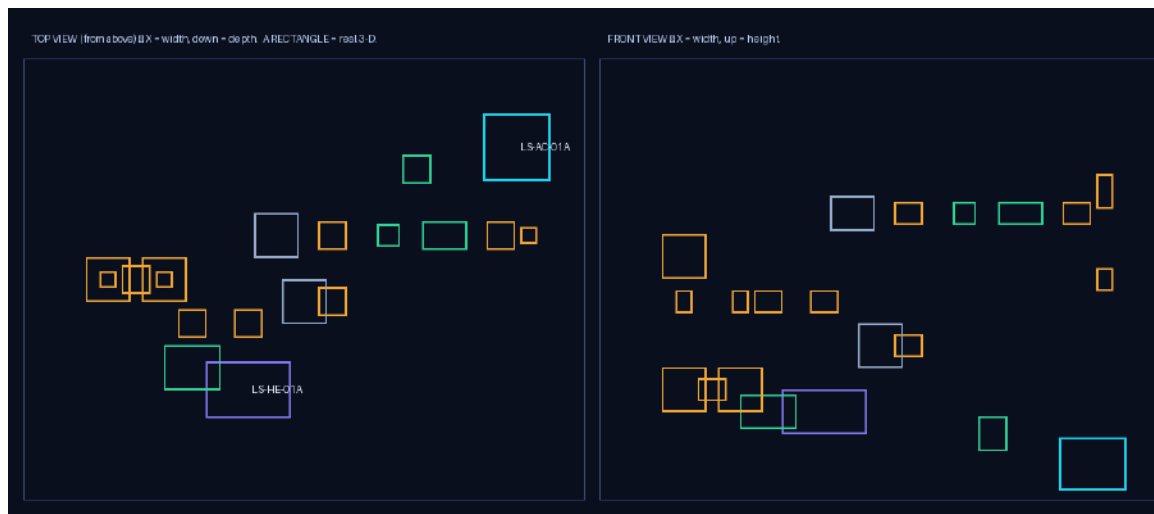


Figure 2 — recovered top and front views: a rectangular footprint from above confirms recovered depth.

## 6. The business case

<b>95%</b>	<b>minutes</b>	<b>P&amp;ID +</b>	<b>validated</b>
less build time	not ~12 days	<b>photos</b>	trust score
		no laser crew	

EON Universal converts the drawings and photos a customer already has into a ready-to-use, operable twin. The commercial consequences are direct:

- **Removes the Genesis adoption barrier** — building the 3D environment is the hardest part of adopting Genesis; this solves exactly that.
- **~95% time reduction** — what takes roughly twelve person-days of skilled work, with uneven results, is done in minutes with a better outcome.
- **A premium, defensible add-on** — a unique, high-value capability on top of Genesis, and a strong basis to price accordingly.
- **No specialist capture** — a P&ID and ordinary, unsorted phone photos are enough; no laser scanner or specialist crew.

## 7. Trust - proven, not asserted

Because the output is used for training, maintenance, and lockout/tagout, it must be trustworthy. Validation is graded — cheap checks first, deep checks only when warranted:

<b>Scorecard</b>	parts found, pipes connected, anything unwired, per-part confidence
<b>Side-by-side</b>	the photo next to the model rendered from the same angle
<b>Reverse-projection</b>	the twin projected onto the photo, scored per component
<b>3D comparison</b>	a deep audit against a scan, when the stakes call for it

## 8. Why it is defensible

The commodity parts - a vision model that draws boxes, a mesh generator - are widely available, and a customer who owns them still cannot produce a correct twin. The defensible core is the combination: the intelligent, dimensioned component library (the

geometry source and scale anchor), the tag-keyed fusion under a confidence-governed contract, and validation delivered as part of the product. That combination - and the specific method described here - is the subject of a pending patent application.

## 9. Conclusion

**EON Universal turns the drawings and photographs a facility already has into an accurate, connected, correctly-scaled, and validated 3D twin — in minutes, cutting 3D content-generation time by roughly 95%. It removes the single biggest obstacle to adopting Genesis, and it does so with a method that is fast, intelligent, accurate, and protected.**

*“Bring your drawings and a few photos. Leave with a twin.”*