

WORLDS, NOT WORDS



Worlds, Not Words

The AI industry just bet \$2 billion on the thesis EON has been operating on for 25 years.

OPERATING THESIS

Physical work cannot be captured by language alone. It must be demonstrated, practiced, verified, and compounded inside worlds.

Work

INTELLIGENCE

The

INTELLIGENCE FLYWHEEL

Human

2.0



THE SHIFT

AI's next frontier is world models

Fortune, June/July 2026: the field's biggest names are moving from language models to AI that learns how the physical world behaves.

~\$2B
RAISED

by World Labs and AMI Labs

30B+
IMAGES

powering Niantic Spatial

"ChatGPT"
MOMENT

Nvidia's physical AI forecast

RACE UNDERWAY

Google Project Genie, Nvidia Cosmos, Decart, Odyssey, and others are racing toward AI that simulates space, physics, and cause-and-effect.



WHY WORDS ARE NOT ENOUGH

Real work happens in worlds

Language can describe a scene. Work requires space, time, sequence, physics, and verification.

LANGUAGE MODELS

Read about work - never performed it

Can describe a scene, but not what is hidden or what happens next

"Completely helpless in the physical world" - Yann LeCun

REAL WORK

Happens in space, time, and sequence - under physics

Field technicians, operators, surgeons, engineers

Requires demonstration, practice, verification

EON's founding principle: We believe in worlds, not words.



FIVE REASONS

The world-model wave validates EON

The industry is building engines for physical AI. EON already has the expert-work curriculum and operating flywheel.

■ 1. They are building the simulator. EON has the curriculum.

World Labs, AMI Labs, and Project Genie are spending billions on engines for 3D space and physics. An engine without expert procedures is an empty stage.

■ 2. Nvidia's generative training facility is the Intelligence Flywheel.

Practice + feedback + skill improvement is Show Me -> Let Me Try -> Evaluate Me, already running through Genesis, FieldIQ, AssessIQ, Conductor, and Verdict.



FIVE REASONS CONTINUED

EON's moat is verified physical-work data

World models need scarce, verified, embodied work data. That is exactly what Work Intelligence captures.

■ 3. The industry's biggest bottleneck is EON's moat.

World models cannot train on scraped text. Work Intelligence is the corpus: 4,400+ institutions, 80+ countries, 136M+ downloads.

■ 4. The economics favor EON today.

One leading startup needs a dedicated \$40,000-class GPU per concurrent user. EON delivers world-grounded training on standard devices.

■ 5. Their holy grail is EON's production reality.

Capture skill once, verify it, and transfer it to humans today and machines tomorrow.



WHAT THEY DESCRIBE, WE RUN

The Intelligence Flywheel

Nvidia calls the end state a generative training facility. EON has been running one in production for years.

SHOW ME

Genesis - expert work captured as interactive 3D simulation

LET ME TRY

Practice in the world - FieldIQ AR guidance on the job

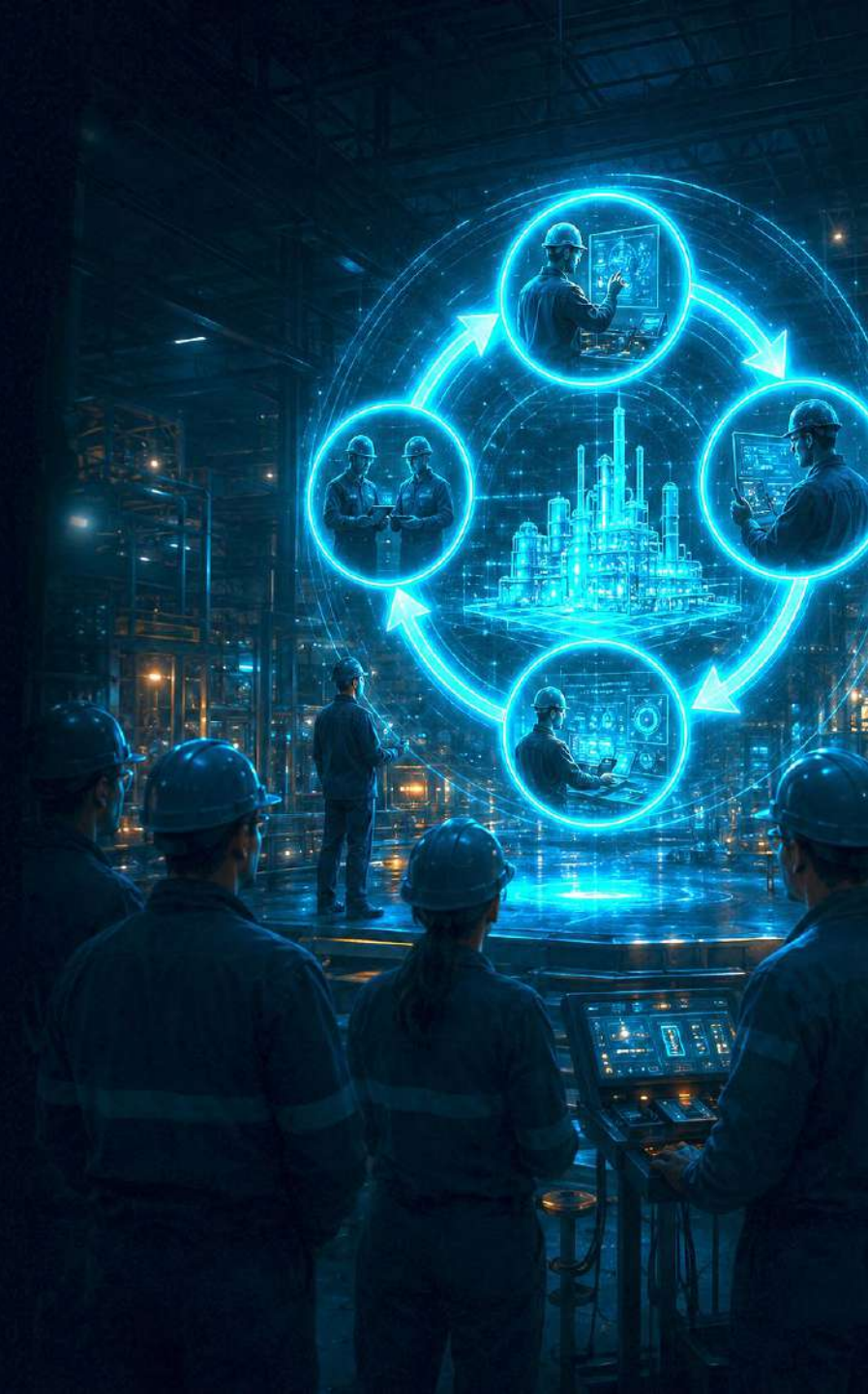
EVALUATE ME

AssessIQ - competency captured and verified

COMPOUND IQ

Every cycle compounds the Work Intelligence corpus

Orchestrated by EON Conductor - trust-gated by EON Verdict.



STRATEGIC POSITION

The verified world-data layer

As world-model engines commoditize, the scarce asset is verified procedural knowledge: Work Intelligence.

Engines need content

The scarce asset is verified procedural knowledge.

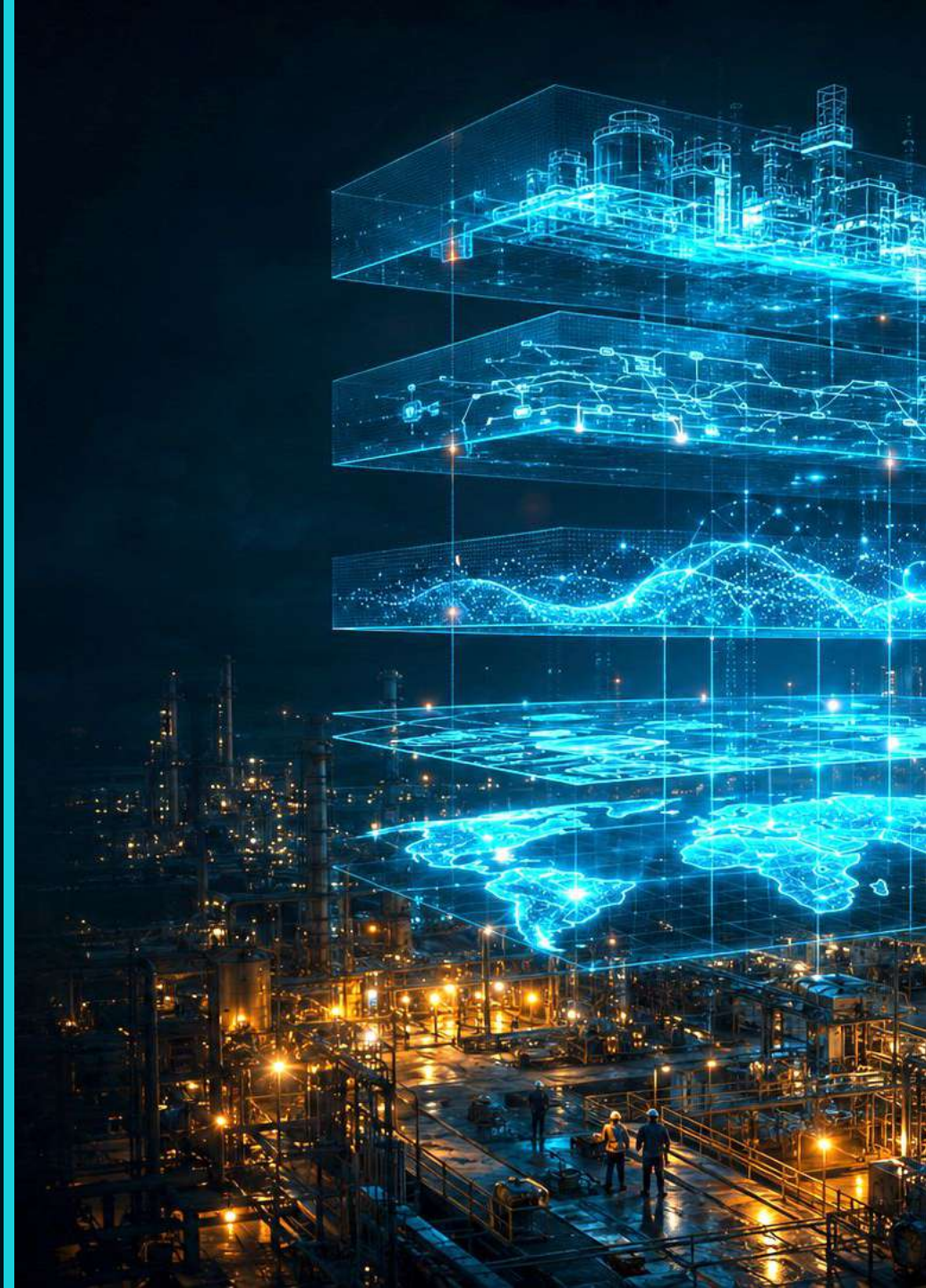
Simulation needs trust

No enterprise deploys hallucinated physics in safety-critical operations. EON Verdict turns demos into deployments.

Adoption needs humans

The road to physical AI runs through workforces training in simulated worlds today. Our installed base is that road.

EON AI Ventures: the Work Intelligence company.



The market has spoken.

Billions of dollars now agree: the future of AI is worlds, not words.

EON AI Ventures has been building that future for 25 years.

We believe in worlds, not words.

