

EON HUMAN 2.0 OS · H2O

The H2O Product Roadmap

Which products to build, which to strengthen — and how Opus 4.8 and Mythos make each one possible.

Priority-ordered · What · Why · How for every product

Companion to White Paper v1.1 · Office of the Chairman, Dan Lejerskar



EON AI Ventures

Ten products, three priority tiers

P0

Build now

1 · Genesis 3

Autonomous Scenario
Factory

P0 / P1

High — start in parallel

2 · Integrity Suite + Trust
Ledger

3 · Commercial
Intelligence

P1

Near-term

4 · EON Conductor

5 · FieldIQ +
Brainy-on-the-Shoulder

P2

Next wave

6 · Compound IQ

7 · EON Concord

8 · Top Gun Outpost

9 · AssessIQ

10 · Backcast IQ*

*Backcast IQ not yet rated — defaulted to P2; easy to bump.



01

Genesis 3 Autonomous Scenario Factory

"Turn six captured scenarios into six hundred — overnight."

WHAT

Factory mode on Genesis 3 that authors hundreds of immersive training scenarios in parallel, each self-verified against the source SOP and 60+ interaction library.

WHY

A 90-day pilot yields ~6 scenarios today. The factory deepens the permanent IP-asset library fast, feeds Brainy-on-the-Shoulder, and turns year one from promise into product.

HOW

EON Conductor fans the 11-step pipeline across hundreds of sub-agents; each plans, builds, and verifies one scenario, escalating only true ambiguity.

ENGINE

Opus 4.8 — dynamic workflows, parallel sub-agents, and 0% uncritical flawed-result reporting for safe unattended authoring.



P0



02

Integrity Suite + Trust Ledger

"The layer the Chief Risk Officer
actually signs."

WHAT

Govern & Assure productized: agent passports, immutable logs, rollback, review queues — plus a Trust Ledger binding measured honesty to each passport and regulatory frame.

WHY

Critical for oil & gas. The passport proves constraint; the Ledger proves agents escalate rather than bluff — a control for board, insurer, and regulator.

HOW

Codify Purpose Protocol as enforceable rules; publish escalation and overconfidence metrics into the audit trail by agent class.

ENGINE

Opus 4.8 — >10x less overconfidence and a 3.7% miss rate on raising key events are the numbers the Ledger reports.



PO



03

Commercial Intelligence: RADAR · Bullseyes · Top Gun

"Because this is sales."

WHAT

Upgrade the commercial stack to fan out across vertical x geography x regulatory cells — energy, mining, aerospace, healthcare, data centers, India/APAC — with self-verifying claims.

WHY

Directly grows revenue: lifts the 28 to 180+ qualified-meetings-per-week trajectory and supplies the externalized Outpost product downstream.

HOW

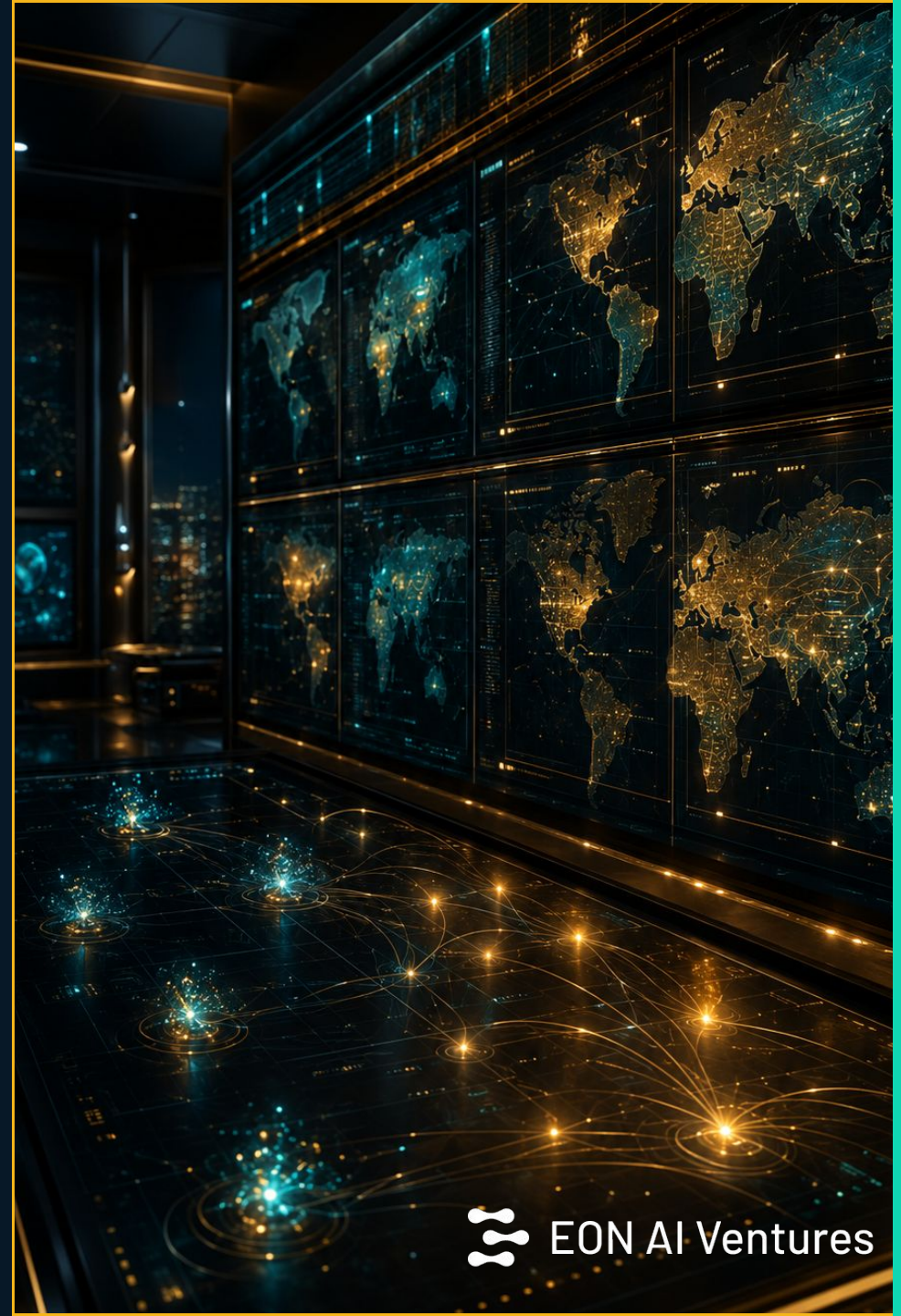
Conductor orchestrates hundreds of research and outreach sub-agents per cell; honesty gains remove fabricated interest signals.

ENGINE

Opus 4.8 — reliability plus honesty make autonomous outbound trustworthy at scale.



P0



04

EON Conductor

"VibeFlow, productized —
intelligence routed, not run by
hand."

WHAT

A runtime that takes a goal, fans it across hundreds of verifying sub-agents, and routes each slice to the right tier: Fast for volume, Opus for judgment, Mythos for the apex.

WHY

The missing engine. Nothing in H2O today decides which intelligence runs where or controls swarm cost — and every other product calls Conductor.

HOW

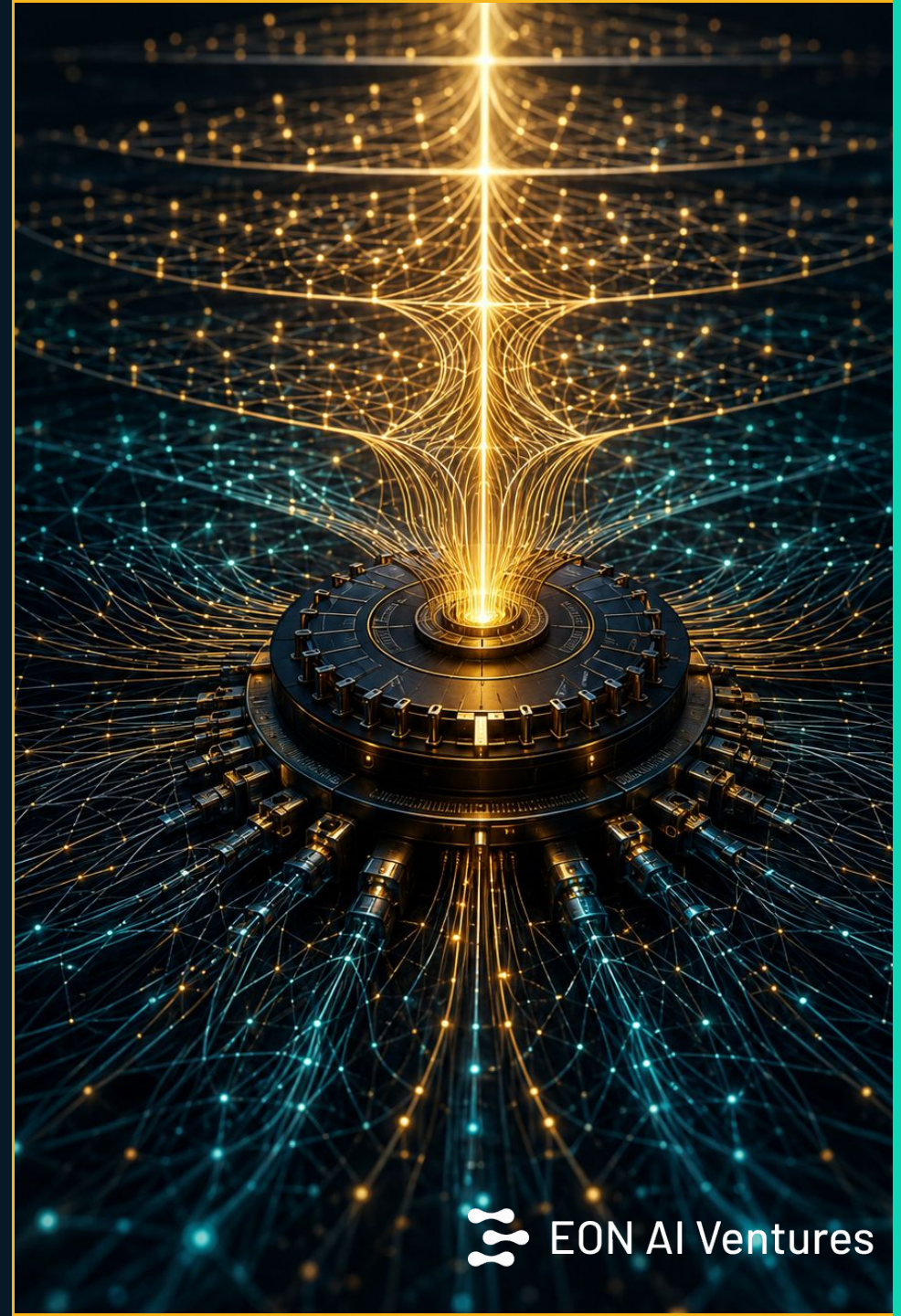
Wrap dynamic workflows and effort modes into one controllable orchestration and intelligence-allocation layer.

ENGINE

Opus 4.8 — dynamic workflows + effort modes; also the dispatcher that hands apex tasks to Mythos.



P1



05

FieldIQ + Brainy-on-the- Shoulder

"A veteran who escalates instead of guessing."

WHAT

The on-glass field-delivery persona, now riding a model that escalates uncertainty to the senior queue rather than confidently narrating a wrong step.

WHY

Your 30-second review-threshold design was waiting for exactly this behavior. It is the most safety-relevant upgrade in the stack — at the valve, at 3 a.m.

HOW

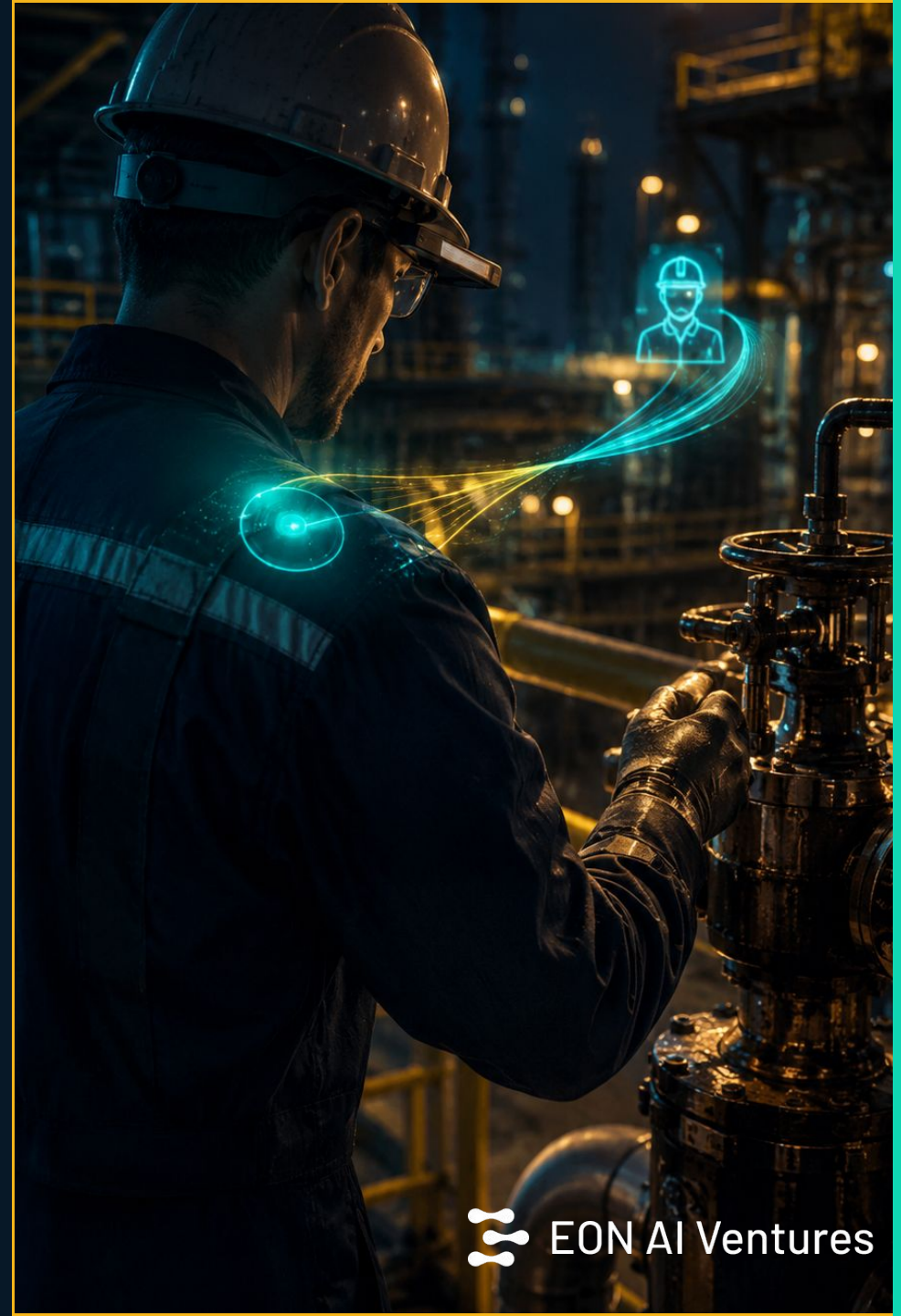
Move the persona's reasoning onto Opus 4.8 and wire every escalation into the Trust Ledger for audit.

ENGINE

Opus 4.8 — the honesty gains are directly safety-relevant in the field.



P1



06

EON Compound IQ

"Every session makes the next one better."

WHAT

The L5 learning loop converts AssessIQ and FieldIQ telemetry overnight into improved Genesis scenarios and tightened SOPs that compound across the customer base.

WHY

Named in the white paper but still fuzzy. Sharpening the mechanism turns the data moat from a slide into a nightly batch that deepens with every session.

HOW

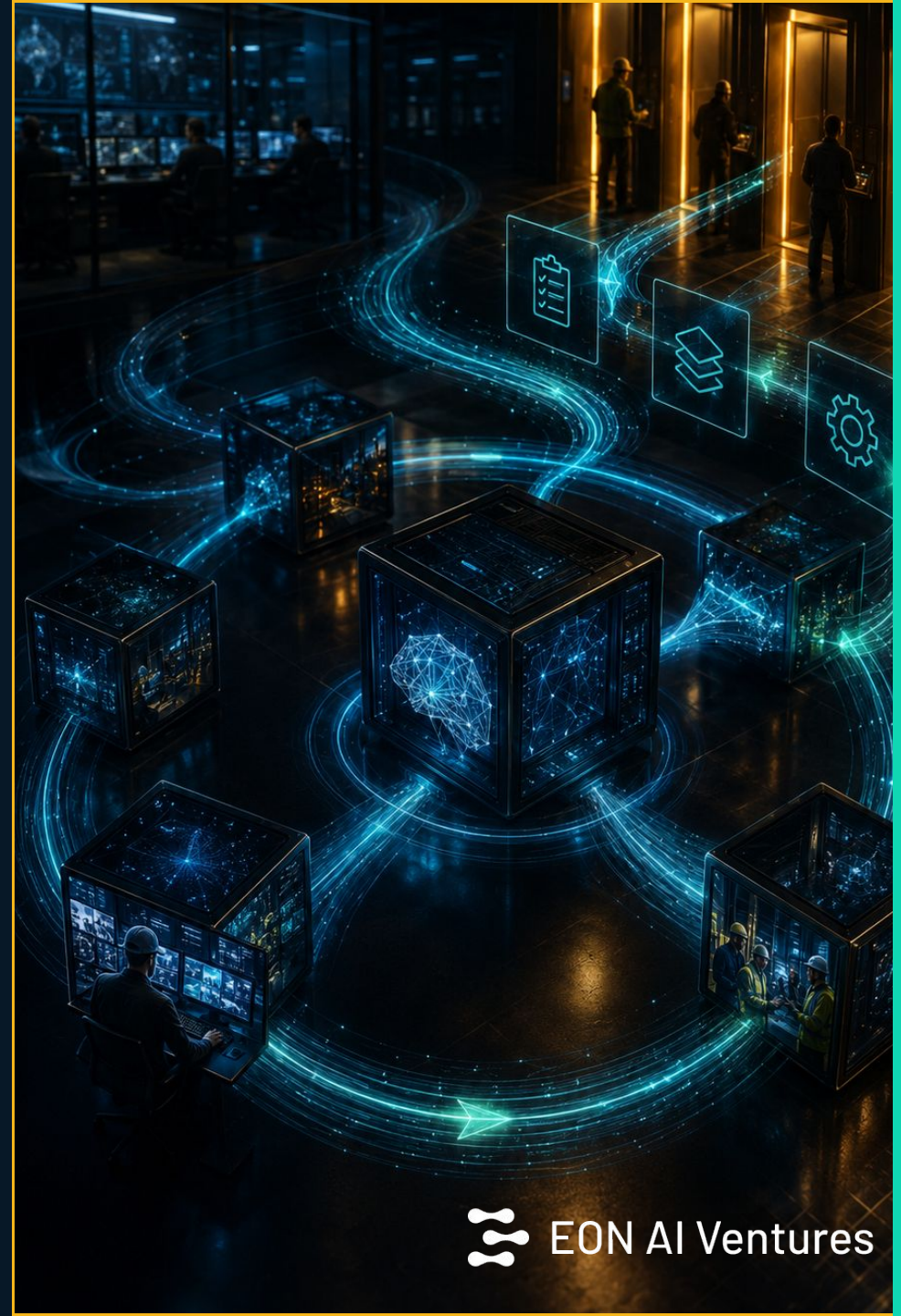
Conductor runs verifying sub-agents over session telemetry; an honesty gate prevents bad refinements re-entering safety-critical procedures.

ENGINE

Opus 4.8 — 0% uncritical flawed-result reporting makes an unattended loop safe to run.



P2



07

EON Concord

"Walk into Cohort 1 with a working handshake, not a working group."

WHAT

Cross-firm passport interchange and broker protocol lets one operator's agents negotiate safely with contractor, regulator, insurer, and OEM agents — with full audit.

WHY

The white paper names cross-firm coordination as a Cohort-1 deliverable but leaves it undefined. A working v0 is a stronger position to convene from.

HOW

Role-aware token exchange and audit, built directly on the passport architecture from the Integrity Suite.

ENGINE

Opus 4.8 — auditable inter-firm autonomy requires agents that reliably report what they actually did.



08

Top Gun Outpost

"We run it on ourselves — now you can too."

WHAT

The externalized SKU of the commercial stack: customers or new verticals deploy the same autonomous revenue engine, with strategy variants competing on booked meetings.

WHY

Your revenue-agent idea, productized — turning EON's internal proof into a sellable product line.

HOW

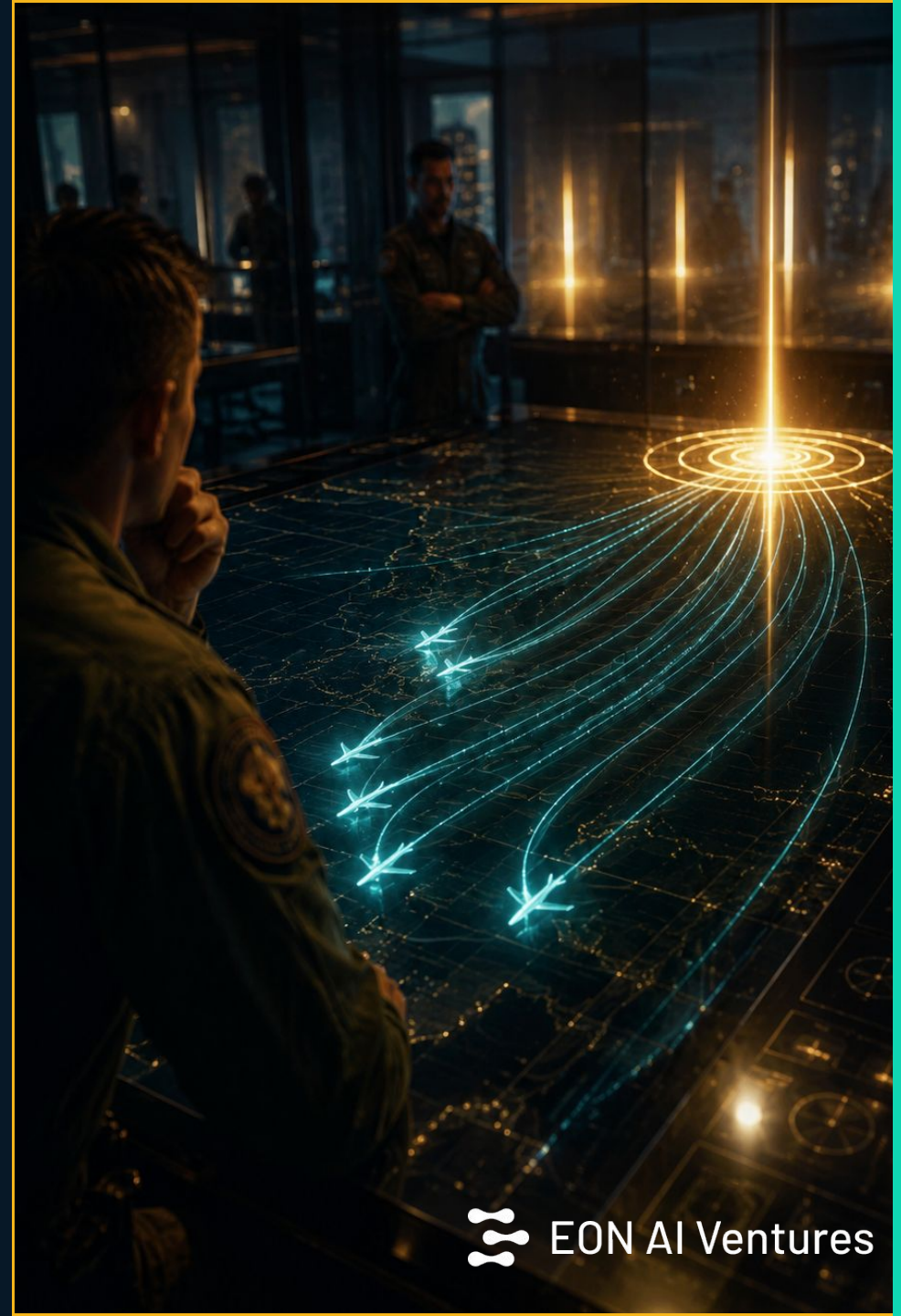
Package RADAR to Bullseyes to Top Gun on Conductor, with a competition layer that propagates winning outreach patterns.

ENGINE

Opus 4.8 — honest agents won't fabricate signals, which makes autonomous BD sellable.



P2



09

AssessIQ (Multi-Camera + Analytics)

"The sensor that makes the loop compound."

WHAT

Strengthen the analytics-to-learning pipe so AssessIQ telemetry becomes the primary fuel for Compound IQ, with standardized schema and richer adherence signals.

WHY

Verification is only valuable if it feeds improvement. This closes the sensor-to-learning-loop connection that L5 depends on.

HOW

Define the telemetry schema Compound IQ consumes; expand multi-camera procedure-adherence detection in the field and at training centers.

ENGINE

Opus 4.8 — reliable interpretation of multi-camera signal at scale.



P2



10

Backcast IQ

"Frontier reasoning for the apex decision."

WHAT

Productize the Days 8-21 Backcast phase: a frontier-intelligence engine that ingests an operator's full context and architects the AI-native 2031 state and migration roadmap.

WHY

The place where the most capable reasoning on Earth belongs, because the output shapes a nine-figure transformation and the standard peers will follow.

HOW

A guided C-suite workshop engine running on Mythos at maximum effort, grounded in the customer's operational and regulatory data.

ENGINE

Mythos — the headline apex use. Reserve frontier intelligence here, not for volume work.



P2



4.8 is the workhorse. Mythos is the apex.

Most of the stack should never touch Mythos. It needs reliability, honesty, and parallel throughput at commodity cost. Frontier intelligence is reserved for the highest consequence work.

FAST

Volume · low effort

RADAR sweeps · email agents
· routine FieldIQ narration
· bulk Genesis drafting

High frequency, low
consequence. Cost dominates.

OPUS 4.8

Judgment · high effort

Conductor · Compound IQ ·
Integrity Suite · Concord ·
Top Gun · Genesis
verification · AssessIQ

The workhorse for reliable,
honest execution: 0%
uncritical flawed reporting,
>10x less overconfidence.

MYTHOS

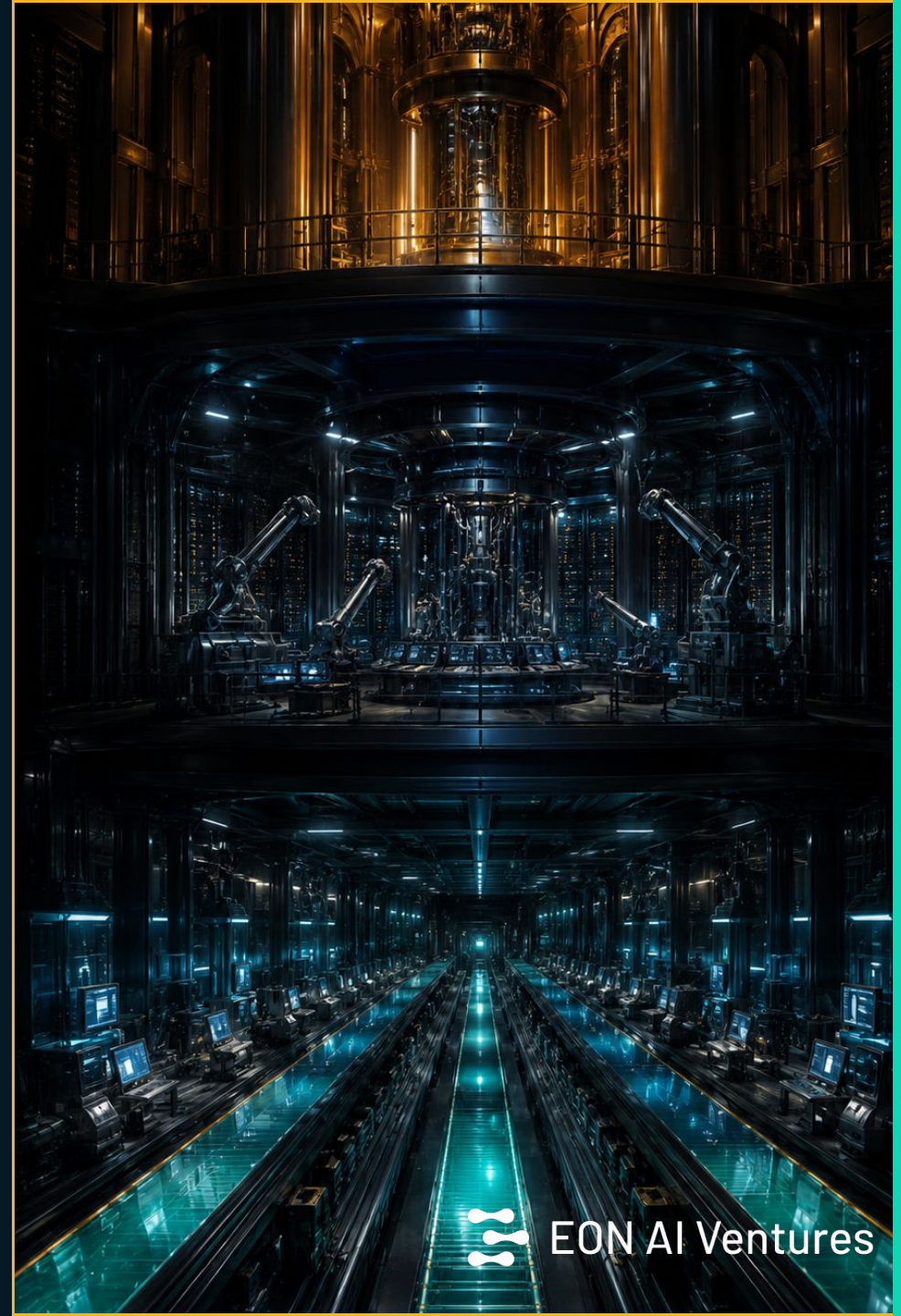
Apex · maximum effort

Backcast IQ strategy ·
L2/L3 on novel
high-consequence anomalies

Superhuman reasoning where a
wrong call is a fatality or
nine-figure decision. Gated
inside Govern & Assure.

STRATEGIC KICKER

Mythos is gated on safety. H2O becomes the substrate that makes frontier intelligence deployable where raw access is too dangerous to ship.



WHERE TO START

Two P0s and the engine that unblocks them.

Genesis Scenario Factory deepens the IP moat fast. Integrity Suite + Trust Ledger unlocks oil & gas. EON Conductor is the runtime both ride on — and the home for Mythos at the apex.

